



(<https://extension.entm.purdue.edu>)

STORED PRODUCT PESTS

RED AND CONFUSED FLOUR BEETLES *TRIBOLIUM CASTANEUM* (BHST.) AND *TRIBOLIUM CONFUSUM* DUVAL

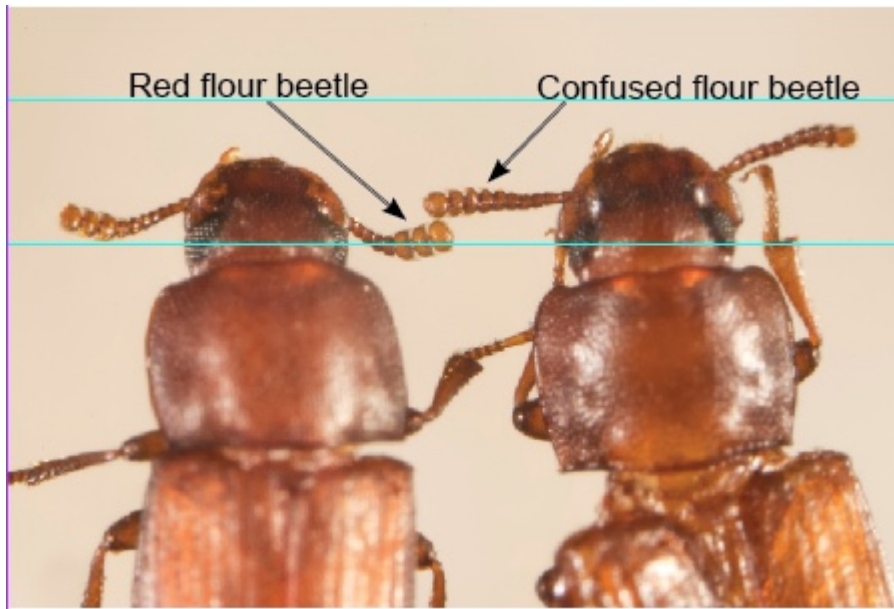
Linda J. Mason, Extension Entomologist

If you want to view as pdf, click [here \(E-224.pdf\)](#).

DESCRIPTION

These two beetles are often grouped together due to the similarity in their appearance, biology, and behavior. The confused flour beetle was named because of the confusion over its identity. The red flour beetle is named after its rust-red color. The two can be easily separated based on antennal characteristics. The antennae of the red flour beetle is distinctly club-like, with a three-segmented club. The club of the confused flour beetle antennae is four segmented and forms the club gradually. Another slight difference is in the shape of the thorax. The sides of the red flour beetle are curved, whereas the thorax of the confused flour beetle is straight. Both species are cosmopolitan in their distribution. Adult beetles are approximately 3.5 mm (1/7").

Larvae of both species are nearly indistinguishable. They are a light honey color and about 6 mm (1/4") long. The head and a distinctive forked process at the tip of the abdomen are slightly darkened.



224graphics/red_confused.jpeg

Red flour beetle on left and confused flour beetle on right. (Photo Credit: John Obermeyer)

BIOLOGY AND BEHAVIOR

Eggs are deposited directly in flour, other food material, or attached to the surface of the container. They are white or colorless and covered by a sticky material to which flour can adhere. Eggs hatch in 3-5 days at 32-35°C (89.6-95°F). Larvae burrow into kernels of grain but may leave their burrows in search of more favorable food. There are 5-11 larval instars (7-8 is usual), the variation a result of environment, food, temperature, humidity, or the individual insect. Larvae are fairly active but generally hide within the food, away from light. Pupae are naked, without protection of any form. Development time from egg to adult varies with conditions, however, the average is 26 days at 32-35°C (89.6-95°F) and >70% Rh. The minimum, maximum, and optimum temperatures for development of the confused flour beetle are all about 2.5°C lower than the red flour beetle. Limits of development are imposed mostly by larval mortality, esp. among early instars. The minimum temperature for development is between 20-22°C (69-71.6°F), the maximum 37.5-40°C (99.5-104°F) when the relative humidity is either low (10-30%) or high (90%). Flour beetles can survive in grain with moisture contents as low as 8%. Average fecundity is 400-500 eggs per female, with peak oviposition occurring during the first week. Adults may live longer than 3 years, and females may lay eggs for more than a year.



(E-224graphics/RFBtleEggTopBtleBottomPinPoint.jpg)

Red flour beetle lifecycle. (*Photo Credit: John Obermeyer*)



(E-224graphics/RFBtleAdultDorsalRulerMM.jpg)

Red flour beetle adult. (*Photo Credit: John Obermeyer*)



(E-224graphics/ConfusedFlourBtlesDorsalMMscaleMicro.jpg)

Confused flour beetle adult. (Photo Credit: John Obermeyer)

Adults of both species have well developed wings, but only the red flour beetle has been observed to fly, and it is not a strong flyer. When agitated or crowded, they may secrete chemicals called quinines. These chemicals can cause the infested feed to turn pink and have a pungent odor. Confused flour beetles have been reported to prefer, and aggregate in flour exposed to quinines, whereas quinines repel red flour beetles.

FOOD

Flour beetles can be found infesting a variety of grain and food materials. They have been reported from grain, flour, and other cereal products, beans, cacao, cottonseed, shelled nuts, dried fruit, dried vegetables, drugs, spices, chocolate, dried milk, animal hides, herbarium and museum specimens. They cannot feed on whole grain, but can feed on broken kernels that are usually present. In general, fungi may play a significant role in the nutrition of flour beetles.

READ AND FOLLOW ALL LABEL INSTRUCTIONS. THIS INCLUDES DIRECTIONS FOR USE, PRECAUTIONARY STATEMENTS (HAZARDS TO HUMANS, DOMESTIC ANIMALS, AND ENDANGERED SPECIES), ENVIRONMENTAL

HAZARDS, RATES OF APPLICATION, NUMBER OF APPLICATIONS, REENTRY INTERVALS, HARVEST RESTRICTIONS, STORAGE AND DISPOSAL, AND ANY SPECIFIC WARNINGS AND/OR PRECAUTIONS FOR SAFE HANDLING OF THE PESTICIDE.

November 2018

PURDUE EXTENSION

It is the policy of the Purdue University Cooperative Extension Service that all persons have equal opportunity and access to its educational programs, services, activities, and facilities without regard to race, religion, color, sex, age, national origin or ancestry, marital status, parental status, sexual orientation, disability or status as a veteran. Purdue University is an Affirmative Action institution. This material may be available in alternative formats.

This work is supported in part by Extension Implementation Grant 2017-70006-27140/IND011460G4-1013877 from the USDA National Institute of Food and Agriculture.

1-888-EXT-INFO

www.extension.purdue.edu (<https://www.extension.purdue.edu/>)

Order or download materials from www.the-education-store.com (<https://www.the-education-store.com/>)

Communication +

Campus +

Services +

Other +

WE ARE PURDUE

WHAT WE MAKE MOVES THE WORLD FORWARD

f (<http://www.facebook.com/PurdueUniversity>)

 (<http://twitter.com/LifeAtPurdue>)

 (<http://www.youtube.com/purdue>)

 (<http://www.instagram.com/lifeatpurdue>)

 (<http://www.pinterest.com/lifeatpurdue/>)

 (<http://plus.google.com/+PurdueUniversity>)

in (<https://www.linkedin.com/edu/purdue-university-18357>)

Purdue Extension Entomology, 901 W. State Street, West Lafayette, IN 47907, (765) 494-8761

Department of Entomology (<https://ag.purdue.edu/entm/>) | **College of Agriculture** (<https://ag.purdue.edu/>) | **Extension** (<http://www.ag.purdue.edu/extension/>)

© 2016 Purdue University (<http://www.purdue.edu/purdue/disclaimer.html>) | [An equal access/equal opportunity university](http://www.purdue.edu/purdue/ea_eou_statement.html) (http://www.purdue.edu/purdue/ea_eou_statement.html) | [Copyright Complaints](http://www.purdue.edu/securepurdue/DMCAAgent.cfm) (<http://www.purdue.edu/securepurdue/DMCAAgent.cfm>) | **Maintained by Tammy Luck**

Trouble with this page? Disability-related [accessibility](http://www.purdue.edu/disabilityresources/) (<http://www.purdue.edu/disabilityresources/>), issue? Please contact Tammy Luck at luck@purdue.edu (<mailto:luck@purdue.edu>).